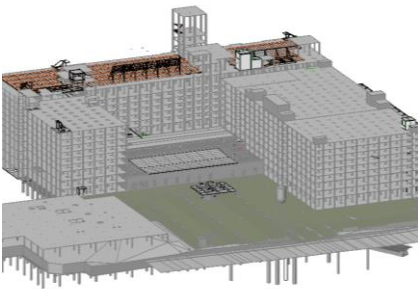


PONCE CITY MARKET

Atlanta, Georgia



The Ponce City Market development is the largest adaptive reuse project in Atlanta's history and consists of the renovation of 1.8 million square feet of the historic Sears, Roebuck & Company building in Atlanta, Georgia, with a budget of

\$100 million dollars. The project included converting the existing concrete buildings into an urban infill mixed-use project that contains retail, restaurant, office and parking components as well as the introduction of a new elevated plaza, free standing 8-story parking ramp, bridge to the Atlanta Beltline, and the re-structuring of the 1926 roof component into an amenity and amusement space.



BROWDER + LEGUIZAMON