

PIEDMONT—ELLIS HOUSING

Georgia State University, Atlanta, Georgia



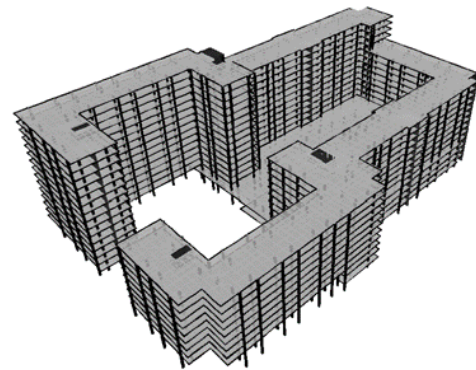
The (532 ft. long x 319 ft. wide) building encompasses 1.2 million sq. ft. and includes 2,000 beds, meeting and study rooms, an elevated courtyard-style plaza, retail space, and five parking levels with 768 spaces.

Constructed on almost seventeen hundred 16-inch diameter auger-cast piles, the building has a 6-inch basement slab to resist the upward pressure of a high water table. Reinforced concrete columns and shear walls support 8-inch thick two-way post-tensioned flat plates at most floors. The plaza level uses a 10-1/2- inch thick slab in order to support the weight of landscaping and, if necessary, fire trucks. Parking Levels 3 and 4 have a 260-ft. tie-back wall to retain two stories of soil .

Column design presented the challenge of using a uniform size throughout a building level without varying slab thickness, while column spacing at the parking levels had to allow room for vehicles to maneuver. Using concrete up to 10,000-psi and additional reinforcing met these challenges.

Architectural precast concrete covers the building exterior.

American Concrete Institute 1st Place High-Rise Award-Winner



BROWDER + LEGUIZAMON